

# PC SOFTWARE

## ImageCapture-I



### Description

PC software ImageCapture-I is a camera control program for optimal and ergonomic image capturing using DSP- and FPGA-based camera families from ABS. Despite of numerous control functions the software remains a very simple and easy-to-use program with a high-performance and individually configurable multi-window user interface. Powerful image processing components provide, besides of standard controls, various trigger options, several image filters, nonlinear dynamic enhancement, and color correction.

Complete parameter sets can be stored in form of profiles which can be restored easily.

### Application Possibilities

- Camera-based inspection and documentation
- Endoscopy applications
- Microscopy applications
- Fault detection on machines and devices
- Quality ensurance

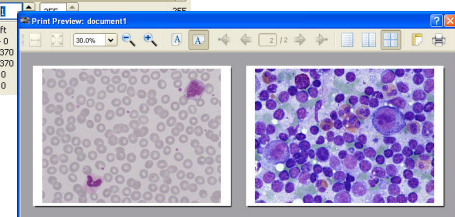
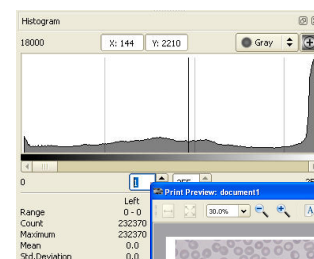
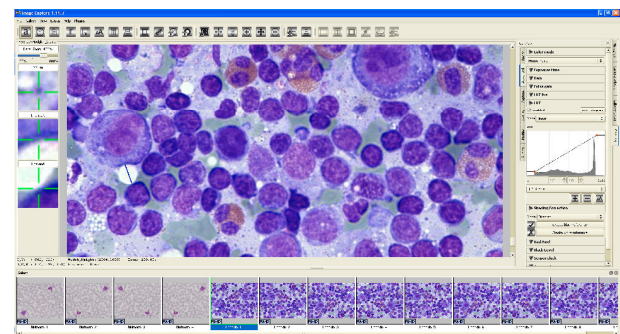
### Camera Suggestions

- Mini camera family
- Flat camera family
- Cylinder camera family
- CCD line camera
- SWIR camera

### Supported Features

- Live image preview and display of previously captured snapshots
- Arbitrary selectable single-shot- and sequence image capturing modes
- Full monitor display mode
- Image save function, also accessible from full monitor display mode
- Full monitor displaying of single images
- Automated capturing of image sequences by timer control and hardware trigger
- Under- and overexposure warning
- Live histogram
- Parameter profiles for user interface and camera control
- Distance measurement between image features
- Supported graphics formats: BMP, JPG, PNG, TIFF.

### Software User Interface



PC\_Software\_ImageCapture